



PRE-BOOKABLE EXTRAS (Prices 2021/2022)

PLAGNE CENTRE



SKI
LESSONS

Ski School ESF - prices 2021/22 (Lessons only - lift passes not included) - Subject to availability					
If you require ski lessons for a different duration please enquire with a member of the Ski Collection team for costs.			Please note that a booking fee of £9 per party will apply		
Piou Piou/Ourson Club	Prices		Period	Lesson Times (Sunday or Monday to Friday)	
	Low Season	High Season			
Children (3-4 yrs)	6 days	6 days	Low Season	Same times as Child Group Lessons below.	
Half Days Mornings	£161	£191			
Half Days Afternoons	£135	£165	High Season		
Child Group Lessons	Prices		Period	Lesson Times (Sunday or Monday to Friday)	
	Low Season	High Season			
Children (5-13 yrs)	6 days	6 days	Low Season	A: Sun: 09.30-12.00 & Mon-Fri: 09.15-12.00. C: Sun: 09.30-12.00 & Mon-Fri: 09.15-12.00 OR Sun-Fri: 14.05-16.05. E: Sun: 09.30-12.15 & Mon-Fri: 09.15-12.15 OR Sun-Fri: 14.20-16.50	
Morning Lessons	£161	£191			
Afternoon Lessons	£135	£165			
Full Day Lessons	n/a	£275	High Season	B: Sun: 09.30 - 12.00 & Mon-Fri: 09.15-12.00 OR Sun-Fri: 14.05-16.05. D: Sun-Fri: 09.15-12.00, 12.30-14.30 OR Sun-Fri: 14.35-17.05. F: Sun: 09.30-12.15 & Mon-Fri: 09.15 - 12.15 OR Sun-Fri: 14.20-16.50	
Adult Group Lessons <th colspan="2">Prices</th> <th rowspan="2">Period</th> <th rowspan="2">Lesson Times (Sunday or Monday to Friday)</th>	Prices		Period		Lesson Times (Sunday or Monday to Friday)
Adults (+13 yrs)	Low Season	High Season			
Children (8 yrs+) & Adults	6 days	6 days	Low Season	A: Sun: 09.30-12.00 & Mon-Fri: 09.15-12.00. C: Sun: 09.30-12.00 & Mon-Fri: 09.15-12.00 OR Sun-Fri: 14.05-16.05. E: Sun: 09.30-12.15 & Mon-Fri: 09.15-12.15 OR Sun-Fri: 14.20-16.50	
Morning Lessons	£161	£191			
Afternoon Lessons	N/A	£165			
Full Day Lessons	N/A	£275	High Season	B: Sun: 09.30 - 12.00 & Mon-Fri: 09.15-12.00 OR Sun-Fri: 14.05-16.05. D: Sun-Fri: 09.15-12.00 OR Sun-Fri: 14.35-17.05. F: Sun: 09.30-12.15 & Mon-Fri: 09.15 - 12.15 OR Sun-Fri: 14.20-16.50	
Snowboard Group Lessons (*)	Prices		Period		Lesson Times (Sunday or Monday to Friday)
	Low Season	High Season			
Children (8 yrs+) & Adults	6 days	6 days	Low Season	A, C, E & G: Sun-Fri: 09.15-12.00	
Half Day Lessons	£161	£220			
Full Day Lessons	N/A	£297	High Season	B: Sun-Fri: 09.15-12.15 OR 13.30-16.30. D & F: Sun-Fri: 09.15-12.15 OR 14.00-17.00	

Low Season: A = 12/12/21 - 17/12/21, C = 02/01/22 - 04/02/22, E = 06/03/22 - 01/04/22. No adult afternoon ski lessons on these dates. No child afternoon ski lessons for Bronze or Gold Star levels on these dates. No afternoon snowboard lessons during low season.
High Season: B = 19/12/21 - 31/12/21, D = 06/02/22 - 04/03/22, F = 03/04/22 - 22/04/22
(*): The meeting point for Snowboard Lessons is in La Plagne Centre

All times to be confirmed, subject to changes. PLEASE NOTE: a booking fee of £9 per party will apply

Important note:

Lesson times are subject to change right until the last minute. For peak periods (18/12-2/1, 5/2-4/3 & 2/4-22/4) we strongly recommend that you book as early as possible and in any case at least 6 weeks prior to the required dates. Morning lessons tend to get booked up first and therefore we may only be able to offer afternoon classes within 6 weeks of departure. Outside French school holidays the ski school reserves the right to cancel group lessons should numbers be insufficient. If numbers are low, children may join adult ski school groups. In some resorts English speaking instructors may not always be available, particularly at peak times. Cancellation or modification of your lessons between 16 and 0 days before departure will incur a cancellation charge of 100%.

LIFT
PASSES

LIFT PASSES		La Plagne ¹ 18/12-22/4	Paradiski ² 18/12-22/4	Proof of age is compulsory. Free passes for children -5yrs and Senior +75yrs
Adult (13-64yrs)	6 days	£252	£288	For complete beginners, please note that there is also a cheaper lift pass covering Montchavin-Les Coches ski area only although we cannot pre-book this so it has to be bought in resort. Your hands-free lift pass cards will be sent to you in your voucher pack, so you won't have to queue at the lift pass office with a voucher on arrival.
	7 days	£294	£335	
Child (5-12yrs) & Senior (65-74yrs)	6 days	£202	£230	
	7 days	£235	£269	
Family pass*:	6 days	£226	£261	
Adult (13-64yrs)	7 days	£267	£309	
5-12 yrs*	6 days	£175	£204	
	7 days	£209	£242	
*FAMILY PASS: When purchasing 4 ski passes in the same transaction (a minimum of 6 days of the same duration and within the same ski area), including 2 adults and a minimum of 2 children aged 5 to 17 years				
¹ La Plagne: 225km (Les Coches, La Plagne, Montchavin, Champagny)				
² Paradiski: 425km (La Plagne area + Les Arcs/Peisev)				

FREE EXTRA 1/2 DAY BEFORE THE START OF YOUR STAY WITH EVERY PARADISKI PASS VALID FOR 6 TO 15 CONSECUTIVE DAYS

SPECIAL OFFERS:

- 2 adults Paradiski passes bought = 1 free child (5-12yrs) pass (weeks starting 18/12, 9/4, 16/4)
- Paradiski for the same price as La Plagne (6 and 7 day passes only) for the weeks of 8/1, 15/1 and 26/3 (excl Family pass)

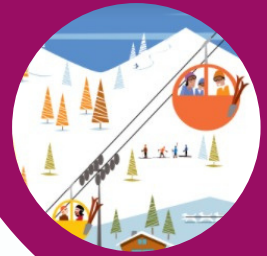
Your hands-free lift pass cards will be sent to you in your voucher pack, so you won't have to queue at the lift pass office with a voucher on arrival.

All pre-booked ski extras are payable to Ski Collection prior to departure. Prices are in £.





SKI/BOARD EQUIPMENT HIRE



7 days for the price of 6	*HIGH SEASON	**LOW SEASON	<i>Resort 6 days</i>
B-SUPERIOR CARVER			
RSB Skis, poles & Boots	£99	£91	€ 152
RSO Skis & poles Only	£72	£65	€ 114

RBB Snowboard & Boots	£99	£91	€ 152
RBO Snowboard Only	£72	£65	€ 114
C-PERFORMANCE CARVER			
NSB Skis, poles & Boots	£124	£109	€ 175
NSO Skis & poles Only	£93	£83	€ 131

NBB Snowboard & Boots	£124	£109	€ 175
NBO Snowboard Only	£93	£83	€ 131
D-PRESTIGE CARVER			
PSB Skis, poles & Boots	£139	£125	€ 199
PSO Skis & poles Only	£105	£93	€ 149
JUNIOR FUN CARVER (3-6yrs) - Max height 1.20m			
CBSB Skis, poles & Boots	£42	£40	€ 56
CBSO Skis & poles Only	£32	£29	€ 42

JUNIOR FUN CARVER (7-13yrs) - Max height 1.60m			
CBSB Skis, poles & Boots	£58	£49	€ 72
CBSO Skis & poles Only	£41	£36	€ 54
JUNIOR SPORT CARVER (7-13 yrs) - Max height 1.60m			
CRSB Skis, poles & Boots	£78	£67	€ 103
CRSO Skis & poles Only	£56	£49	€ 77
JUNIOR SNOWBOARD (9-13yrs) - Max height 1.60m			
CSBB Snowboard & Boots	£78	£67	€ 103
CRBO Snowboard Only	£56	£49	€ 77
HELMET			
Child (3-13yrs) / Adult	£18/ £21		€ 19 / € 22

*HIGH SEASON: 25/12/21-31/12/21 + 5/2/22-4/3/22 - **LOW SEASON: OTHER DATES

Resort price is when not pre-booked via Ski Collection

SKI HIRE EARLY BOOKING OFFER:

BOOK a B or C ADULT PACK (skis/boots) BEFORE 15/11/21 and GET a

FREE CHILD FUN PACK (incl helmet) - Valid for weeks 1/1, 8/1, 15/1, 22/1, 19/3, 26/3 + 2/4

SPECIAL OFFERS

- Free Skis/snowboard & boots (Superior Carver) for party leaders of groups of 10 or more all taking equipment.
- 1 Free helmet per child aged 6 and under for every adult booking skis or snowboards & boots (must be under same booking reference and requested on form above)
- BOOK a B or C ADULT PACK (skis/boots) BEFORE 15/11/21 and get a FREE Child Fun Pack (CBSB) including helmet - Valid for weeks 1/1, 8/1, 15/1, 22/1, 19/3, 26/3 + 2/4

All pre-booked ski extras are payable to Ski Collection prior to departure. Prices are in £.





SKI/BOARD EQUIPMENT CATEGORIES



To ensure you always get the best experience on the slopes, we have 3 categories of ski and 2 categories of snowboard for adults; and 2 categories of skis and 1 category of snowboard for children.

SUPERIOR CARVER – Cat. B

Great modern equipment offering the perfect balance of enjoyment between easy and more challenging skiing in safety on any type of snow, mainly on piste.

These all-rounder skis are flexible enough to turn easily and guarantee stability whilst forgiving your weaknesses; they are thus ideal for building confidence and improving your skiing

Our tip: for recreational to good skiers looking for comfort and control and seeking new thrills

Lady SUPERIOR CARVER – Cat. B

Skis with a refined design: the wide tip makes turning easy, enabling women to ski in comfort and to combine fun with progression.

SUPERIOR SNOWBOARD – Cat. B

Designed for recreational to good boarders seeking excellent behaviour for all-mountain adventures

PERFORMANCE CARVER – Cat. C

Superbly responsive equipment suitable for experienced skiers who can fully appreciate the special features that each type of ski can provide: all mountain, freeride, freestyle, advanced piste skis.

Excellent grip, precise ski control on steep slopes, stability at higher speeds on harder snow, great kick and manoeuvrability on ungroomed snow

Our tip: for keen skiers looking to master technique and in search of new challenges

Lady PERFORMANCE CARVER – Cat. C

These precise and comfortable skis are adapted to a woman's physique, offering excellent grip and manoeuvrability

PERFORMANCE SNOWBOARD – Cat. C

Designed with confident boarders in mind, capable of taking full advantage of any terrain and conditions.

PRESTIGE CARVER – Cat D

Top-end equipment, offering a choice between this season's models and next season's test skis for powder, free ride and expert piste skiing.

Our tip: Skis offering both technology and style – ideal for thrill-seekers. You are an advanced skier and you simply want the best around!

Lady PRESTIGE CARVER – Cat D

Piste or off piste skis designed for expert or demanding women skiers.

JUNIOR FUN CARVER

Stable skis and comfortable boots for easy progress

Our tip: recommended for children who are either beginners or have already tried skiing.

JUNIOR SPORT CARVER

Offering greater control of speed on all terrain with more precision and performance to perfect skiing technique

Our tip: Top of the range juniorski, suitable for intermediate to expert young skiers.

JUNIOR SNOWBOARD

Versatile board for riders of most levels.

Snowblades are charged as per Superior Carver

We strongly recommend that all skiers and boarders wear a helmet!

PLEASE NOTE

Our extras ££ prices are calculated at the exchange rate that applies when the calculations are done. We cannot always guarantee that prices will be cheaper than in resort but you can be assured that if the pound depreciates, you will not be charged more for your equipment, lift passes and ski lessons up until 30 November, enabling you to budget for every element of your holiday at the time of booking your accommodation. Once you have booked any extras with us you are guaranteed that their price won't increase.

All pre-booked ski extras are payable to Ski Collection prior to departure. Prices are in £.

